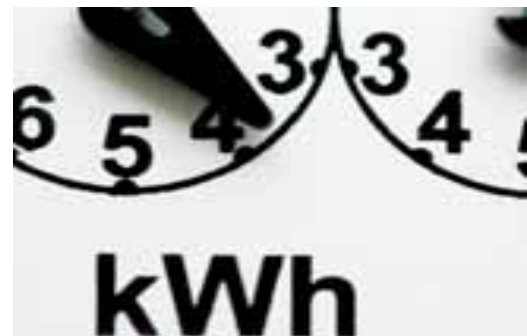


ENERGY EFFICIENCY PROFILE

-
- *ENERGY AUDIT*
 - *ENERGY EFFICIENCY RETROFIT*
 - *ELECTRIC EYE™*
- *ENERGY MONITORING SOFTWARE*
 - *GREEN ENERGY MANAGEMENT*



"Higher energy efficiency would help reduce the volume of investment in supply system expansion and lower production costs.

It will also boost competitiveness in international markets as well as mitigate adverse environmental impact."

BUSINESS TIMES

Name of Company	E-Eye Sdn Bhd
Registration No	393456-M
Incorporated	10 July 1996
Paid-up capital	RM 1,580,000
Authorized Capital	RM 5,000,000
Directors	Muhammad Riza Abd Hamid Rossita Abd Hamid Zuraidah Abd Hamid
Address	No.17A, Jalan BK 5A/2, Bandar Kinrara, 47180 Puchong, Selangor, Malaysia
Telephone	+603 8070 2276
Fax	+603 8070 2059
website	www.eeye.com.my



E-Eye Sdn Bhd is a 100% Malaysian Bumiputera Energy Services Company specialising in promoting corporate profitability through:

Energy Efficiency Programme with zero-cost investment therefore lower operating cost and higher competitiveness.

E-Eye Sdn Bhd (with a parent company of Enceff Sdn Bhd) was set up to integrate and capitalise on the extensive achievements in the field of Energy Management, Energy Monitoring and Energy Auditing.

Our Objectives

- To reduce energy cost of central air-conditioning facilities by 30%-60% through our Energy Efficiency Programme and to achieve an annual savings in utilities at a return-on-investment (ROI) above 30%.
- To demonstrate that energy efficiency improvement project is *low risk-high return* investment propositions that can improve a company's bottom-line and resource productivity.
- To provide more cooling capability and improving indoor air quality but using less energy without compromising or sacrificing existing comfort level.
- To operate facilities at optimum efficiency by providing extra controls and measuring tools will result in lower maintenance cost and better operation.
- To generate interest among building owners, engineering facilities, hotels, hospital operators and other relevant parties via economic proven methodology and environmentally friendly. Less energy consumed means less CO2 emission (the cause of global warming).

Our People



MUHAMMAD RIZA B. ABD HAMID **(MANAGING DIRECTOR)**

- Muhammad Riza Abd. Hamid is a chiller plant system specialist for both industrial and commercial buildings. He is the expert in designing and optimising chiller plant system to achieve efficient levels, thus provide savings to the owner.
- He is the expert in logging instrumentation, chillers and field works. He has experiences more than 15 years in energy audit and Energy Performance Contract (EPC) program.
- One of his successful EPC program was Telekom Jalan Raja Chulan, where he save roughly more than a million ringgit per year after implementing Total Energy Efficiency Retrofit at TM Jalan Raja Chulan.

Our People



DHARAMARAJAH A/L V TAHAMLY RAJAH **CHIEF EXECUTIVE OFFICER**

- VTR Dharamarajah is a registered Electrical Energy Manager (REEM). He is a specialist in commercial / industrial facility system energy efficient retrofit and experience in measurement studies, energy audits and feasibility studies. He is the expert in designing the energy management (Instrumentation) control systems for HVAC and Compressor Systems. He can manage energy pattern and electrical energy used in various building and looking at potential areas where saving is possible.
- He is the Honorary Secretary for MAESCO (Malaysian Association of Energy Companies). He acts as the Energy Speaker on Energy Audit and retrofits for MAESCO & Energy Commission (*Suruhanjaya Tenaga*), CIRED. He involved in publication of Energy Audit Guidelines Book by MAESCO and featured in Green Purchasing Asia Magazine.

Our Services

Implementing a system that guarantee to reduce power consumption by 30%-60% through:

- ❑ Holistic Approach
- ❑ Hardware
- ❑ Electric Eye Software™
 - Graphical Energy Monitoring & Control System



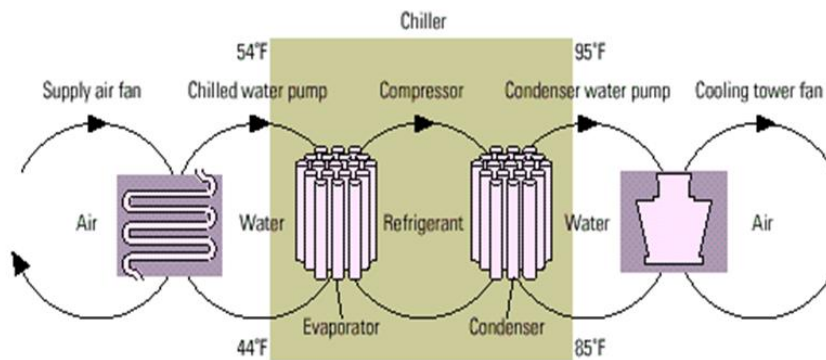
Hardware

Software

Total
System

❑ “Holistic Approach”

Optimizing the performance of synergistic components of the whole system instead of the traditional one-to-one replacement, we take a step further by focusing on the right selection of equipment and how each part of the system can be optimized to work together to capture the multiple synergistic benefits.



- Optimizing components in isolation without holistic approach tends to ignore the efficiency of the whole system.
- One-to-One replacements often becomes a capital expenditure without an acceptable financial return, due to no significant savings as the system still operating under the old design parameters.
- The “right-sized” equipment (chillers, cooling towers, pumps, AHUs, size of pipes, routing, monitoring system etc) will undermine the efficiency of the system.
- The selected decision should be based on ROI and the “least life-cycle cost” that takes into account future operating expenses, and not necessarily the lowest investment cost.

“...it appears that practitioners frequently ignore the systems approach.

Instead, single components are usually chosen in isolation, not as synergistic components of the whole system.”

*Natural Capitalism. Earthscan, London
(by P.Hawken, Amory B.Lovins, L.Hunter Lovins)*



□ "Hardware"

In E-Eye, we have invested over RM 3 million worth in sensors, instruments, calibration equipment and computers over the years.



15.0 degC Water Bath



0.01 degC Triple Point Bath



29.7646 degC Gallium Cell



"Inaccurate sensors (± 1 degC) = 20% error in Energy Efficiency = wrong decision"...therefore, we only conduct comprehensive Energy Audit using highly accurate sensors and temperature probes calibrated to ± 0.01 degC.

E-Eye are known and established as the only Energy Service Company (ESCO) uses such highly accurate and calibrated sensors.



E-Eye Calibration Lab

"monitoring and evaluation allow for greater energy
and smoother running facilities as problems are caught in very early stages."

Cool Companies. Island Press, California.
(by Joseph J. Romm)

❑ "Electric Eye Software™"

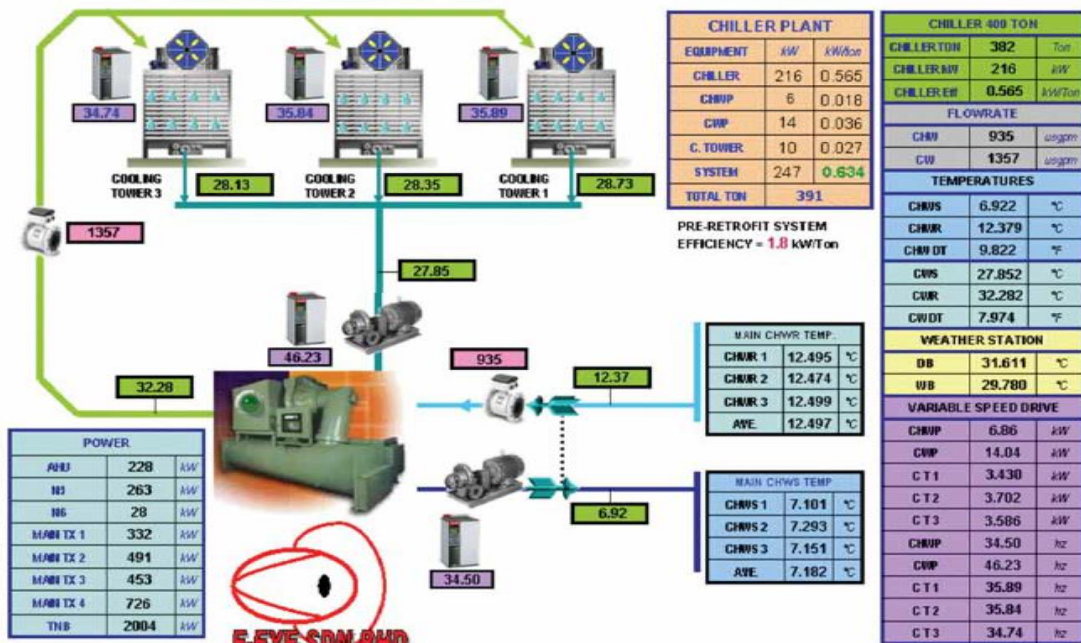
This complete system offers *real-time* (at one minute interval) monitoring, archiving, trend analysis and control of the facility environmental parameters with interfaces to local and remote centres through Intranet, Internet or short message services.

Electric Eye Software™ is our real-time 3-D graphical data visualization and analysis software package.

It is capable of handling huge gigabyte size data sets with multimedia input such as video, sound, 3D CAD and virtual reality. Data can be sampled up to one-minute interval and can be integrated into actual AUTOCAD DXF drawing file for easy reference to the sensor locations in the facility.

With E-Eye, we can have accurate real-time and historical data to show how real buildings actually function and where we can improve the energy usage for a much lower operating cost.

This system definitely enhances your expertise in energy efficiency engineering programs for mechanical ventilation and air-conditioning system, building management and automation system, and other mechanical and electrical utilities.



Electric Eye Software™ and other measuring tools:

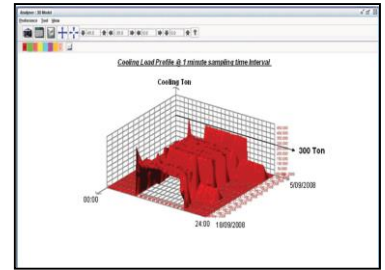
Electric Eye Software™

3D energy data analysis software developed by E-Eye Sdn Bhd.

It took almost 10 years of experience and effort to develop the “one and only” 3D energy analysis software in the world.

The software was also used by Lawrence Berkeley Lab for their energy research program work in USA.

We are now developing our 3rd generation software while incorporating neural net fuzzy logic algorithm into our software for learning.



Dust Counter Monitoring Software™

E-Eye sdn bhd also developed a software for Electrostatic and Dust counter monitoring for clean room.

It was installed in Western Digital, Singapore and ST Microelectronics, Singapore.

The software basically does online particle counter monitoring inside a clean room. The software also provide SPC charting and other features.

Generic Modbus Software™

E-Eye sdn bhd also developed a Java based software to run on internet that will pull and collect data from sensors and equipment that use Modbus Protocol, such as Powermeter and Variable Speed Drive (VSD).

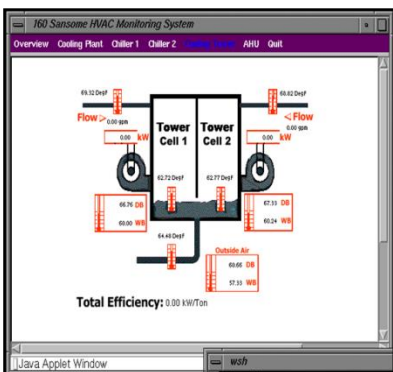


Factory DNA Web Software™

A Java based program to do monitoring and analysis of data on the web. As Internet and network becoming faster, information of energy usage must be easily available by using a web browser.

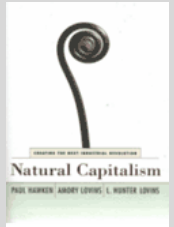
The software is being used and installed in a building in San Francisco and another one will be installed in Sacramento.

This software was also used in the “Building Diagnostic Project”, which is run by LBL,Stanford University and UCSD.



"The problem with many systems today revolves around poor design. Mistakes continue because bad designs known to work are simply copied and seldom questioned."

*Natural Capitalism. Earthscan, London
(by P.Hawken, Amory B. Lovins, L. Hunter Lovins)*



Our Energy Programme

- ❑ Energy Efficiency Programme
 - Pre-Audit Review
 - Energy Audit
 - Energy Retrofit

- ❑ Shared Savings Agreement (SSA)

Why Shared Savings?

Since performance of the system determines the amount of receivables collected by the Energy Service Company (ESCO),optimization and best practice are always sought after.

❑ Energy Efficiency Programme

▪ Pre-audit Review

To determine the feasibility to conduct energy retrofits.

To outline projection and substantial savings from collected data and findings.

▪ Energy Audit

Conducting comprehensive energy efficiency auditing and accurate data monitoring in all aspect of the building especially on the HVAC system.

Diagnostic measurements and real data acquisition using our powerful Electric Eye software in the Energy Audit Report will outline the method to carry out a performance based Energy Efficiency Improvement project.

▪ Energy Retrofit

From Energy Audit, E-Eye will proceed to do the Energy Retrofit in order to produce the actual savings as per measure, through holistic approach.

Savings and improvements will be documented in our real-time monitoring system at one-minute intervals.

Energy Review Report will show before & after improvements of the energy usage.

❑ Shared Saving Agreement

- A 'Self-Financing' Energy Improvement Project.
- There will be no capital investment from the client.
- Payment is based on the savings proven on monthly basis upon completion of the project.
- Options on terms & percentage of the "SSA" will be proposed to achieve the win-win basis.

Energy Savings Formula

$$(RM)_{\text{saved}} = kWh_{\text{saved}} \times (\text{unit cost})_{\text{kWh}} + kW_{\text{demand saved}} \times (\text{unit cost})_{\text{demand kW}}$$

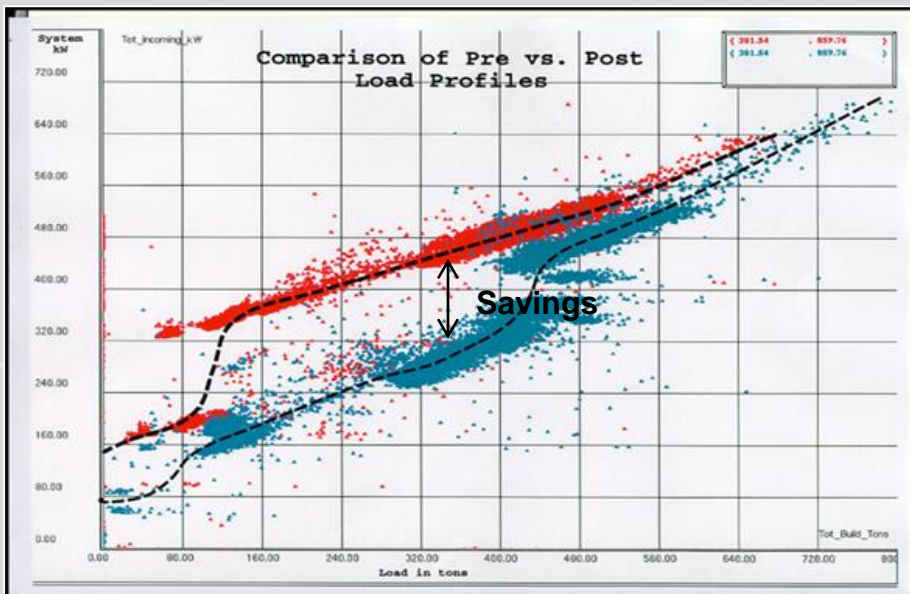
$$kWh_{\text{saved}} = (kW_{\text{before}} - kW_{\text{after}}) \times \text{Operating hours} - \text{per day basis}$$

$$kW_{\text{demand saved}} = (kW_{\text{demand before}} - kW_{\text{demand after}}) - \text{per month basis}$$

Quantification of Energy Savings

Energy savings is expressed as a function of *Energy Efficiency*.

- Baseline
- Savings



"A study done on selected industries in Malaysia showed that it is losing RM 685 million annually due to the use of energy guzzlers, inefficient processes and the lack of simple maintenance skills."

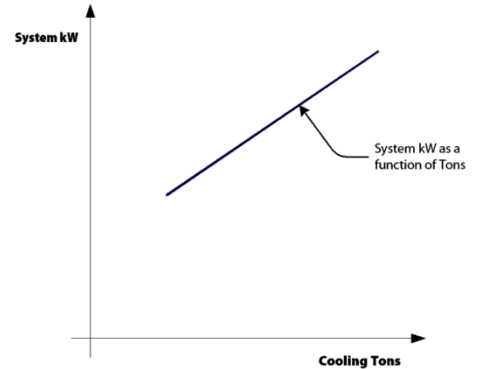
"...and because saving electricity is cheaper than making it, pollution is avoided not at a cost but at a profit."

BUSINESS TIMES

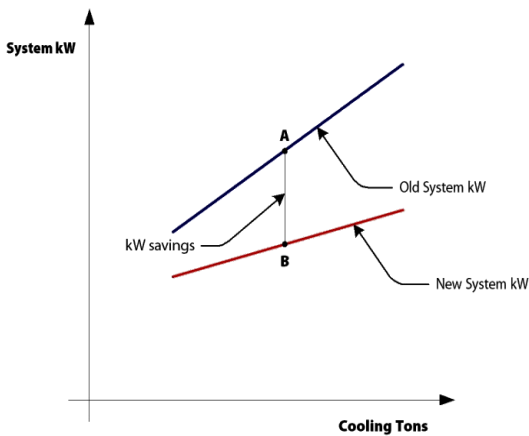
Energy Savings through Energy Efficiency

Efficiency is determined by highly accurate monitoring equipment measuring total system power consumption, cooling load and cooling tons. The parameters are:

- Air conditioning kW and kWh, using a kW transducer at the main switchboard, including Chillers, Pumps, Cooling Towers and AHUs.
- Air conditioning ton-hours of cooling actually used, using high accuracy flow-meters (better than 1% of flow) and high accuracy thermistors on chilled water header supply and return (calibrated with a gallium cell, water bath and water triple-point cell to better than $\pm 0.01^\circ\text{C}$).



Baseline System kW plotted against Cooling Tons (Efficiency)



Baseline and Post-Implementation Efficiency

■ Savings

System kW savings result in a load reduction are shown as $\text{kW}_D - \text{kW}_B$.

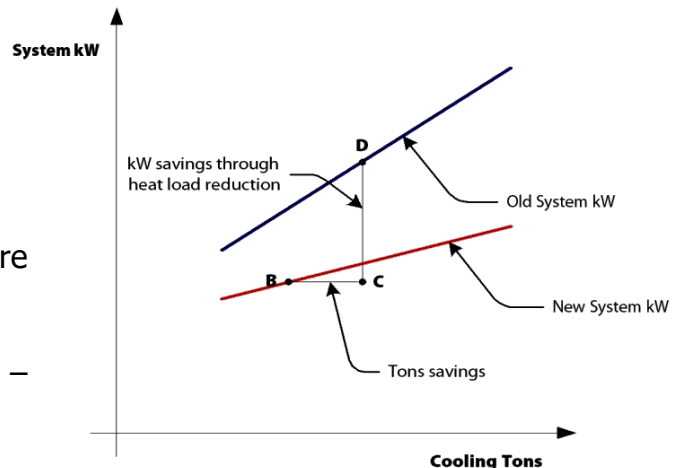
And Cooling Ton savings are shown as $\text{Tons}_C - \text{Tons}_B$.

■ Baseline

Before retrofit, the system will be continuously monitored (24 hours a day at one-minute interval) for load.

And to measure the existing cooling load in order to calculate the existing System kW.

After retrofit, savings is determined by the difference between the actual kW consumption and the kW consumption of the old system.



Savings Quantification

ASEAN ENERGY AWARDS, Retrofitted Building Category

- *Sultannah Zanariah Library, UTM – Runner Up*

[URL:http://www.aseanenergy.org/energy_sector/energy_efficiency/aea/2001/summary.htm](http://www.aseanenergy.org/energy_sector/energy_efficiency/aea/2001/summary.htm)

ASEAN ENERGY AWARDS, Green Energy Management project

- *Grand Hyatt Hotel Singapore – Winner*

[URL:http://www.aseanenergy.org/energy_sector/energy_efficiency/energy_efficiency.htm](http://www.aseanenergy.org/energy_sector/energy_efficiency/energy_efficiency.htm)

Energy Project of The Year - International

- *Western Digital, Malaysia*

Our Achievements

- ❑ Energy Efficiency Retrofit
 - Highlights of Energy Improvement & Green Energy Management project

 - ❑ Energy Audit
 - Implemented Energy Audit
 - Energy Consultancy, Monitoring & Measuring
-

Some of our respective Client



Telekom Malaysia Berhad



Western Digital



STMicro Electronics



StatsChipPac



Universiti Teknologi Malaysia



Grand Hyatt Hotel, Singapore

Energy Efficiency Retrofit

Highlights of our Energy Efficiency Improvement project:

MENARA TELEKOM

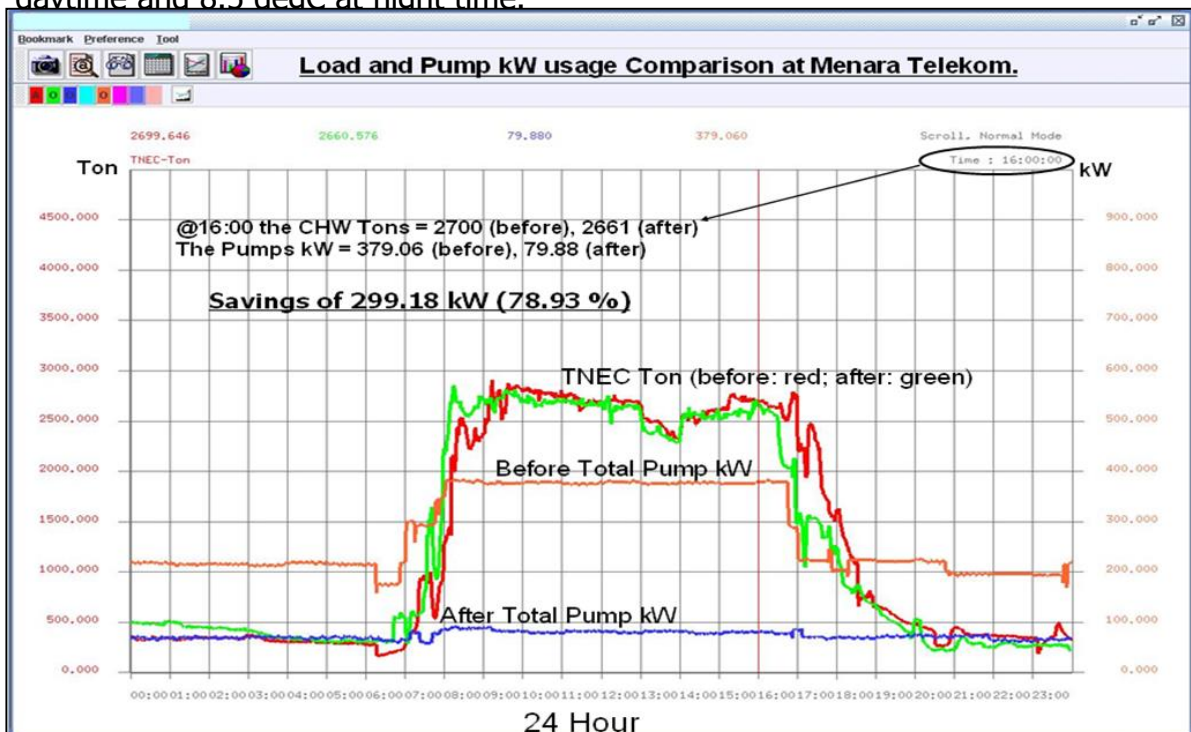
Savings of 78.93 % of pumping kW consumption was achieved with the same load condition.

Pumps retrofit was implemented.

Average pumping kW consumption was reduced from **400 kW** to average of **100 kW** with the running tonnage of around 3000 ton.

Chilled Water Supply (CWS) temperature measurement at the header via the installed Electric Eye Software™ showing average reading of 12.4 degC at daytime and 8.6 degC at night time.

At present condition supply temperature has improved to 9.7degC daytime and 8.5 degC at night time.



▪ **TELEKOM Exchange Building, Jalan Raja Chulan**

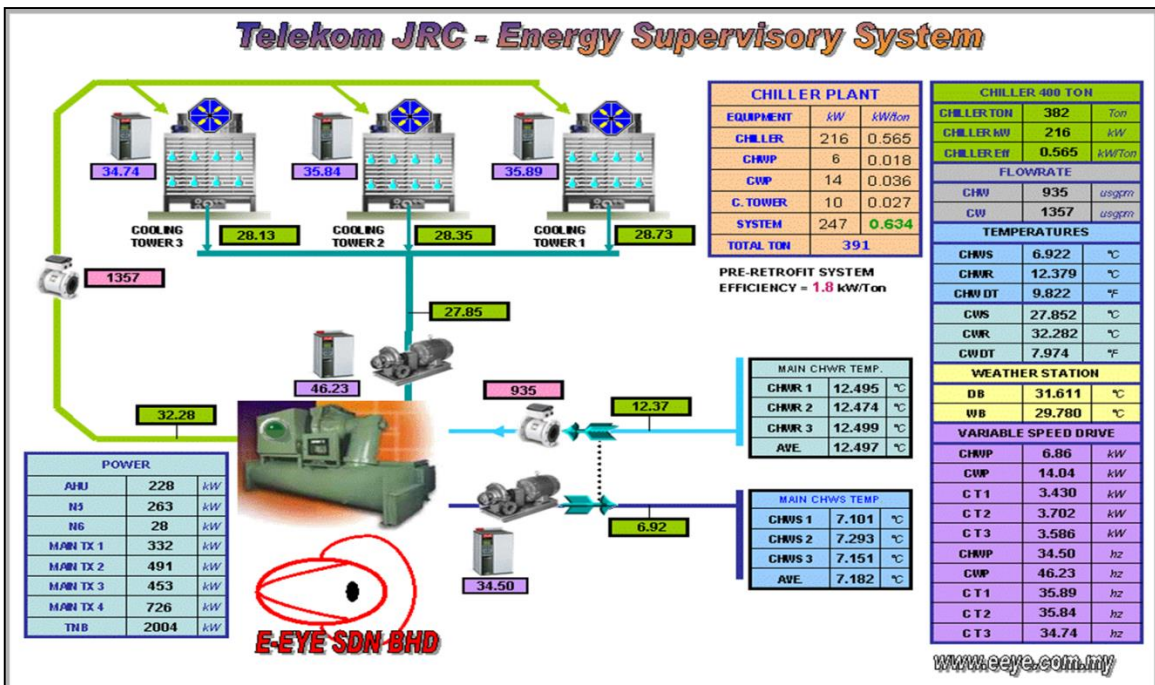
Average savings of **RM 100,000** per month (average of **RM 1,200,000** per annum) from the average electricity bill of RM 350,000 per month.

Implementation of Total Energy Efficiency Retrofit and Energy Improvement at the HVAC plant.

Retrofit and installation of High Efficiency Water Cooled Chiller, Cooling Towers, Piping System, Chilled Water Pumps, Condenser Water Pumps and AHUs replacing existing the existing system which was put as a standby system.

Existing system was reduced from **1.8 kW/ton** to **0.6 kW/ton** without compromising the required cooling load.

The complete system include the installation of the real time web-based Electric Eye - Energy Monitoring Software™ to capture live information on the system for monitoring and savings justification.



■ **StatsChipPAC, Malaysia**

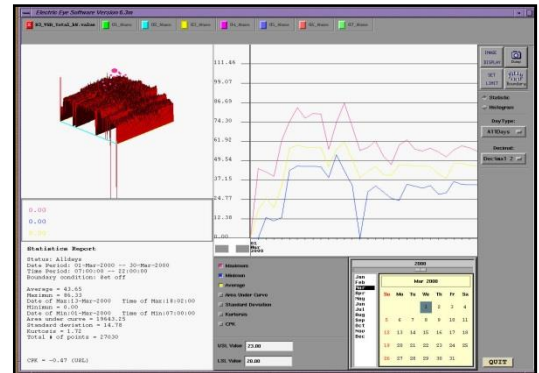


Implementation of AHU Retrofit and Building Monitoring System in year 2001.

Average savings of **RM 350,000 per annum** with an investment of RM 900,000.

Project highlights:

- Retrofit of nine Return Air AHUs (converting 1 unit to Class 10K Cleanroom).
- Savings of 80% of AHU consumption with additional of 180RT on top of the original design tonnage.
- Reducing AHU operating cost by more than 30%.



■ **Western Digital, Kelana Jaya, Malaysia**

Total Energy Retrofit implemented.
 Awarded the world most Efficient Building in 1996.
 Average savings of more than **45%** .



Results from the savings:

- Disk Drives/energy cost per unit

13.5 cents (USD)/disk drive - Factory in Malaysia
 70 cents (USD)/disk drive - Factory in Singapore
 700 cents (USD)/disk drive - Factory in Singapore



Using high efficient axial fan for re-circulation air

▪ **Universiti Teknologi Malaysia (UTM), Skudai, Johor**



Power (kW) savings of 318 kW = 39%.

Lighting intensity Watt/m² reduction of 70% (reduced from 24.7 to 7.5).

kWh per annum/area (kWh/m²) reduction of 58% (from 169 to 99).

Electronic ballast was selected on this criteria:

- Total Harmonic Distortion (THD) of less than 20% or 10% depending on the model.
- Power factor >95%.
- Lamp current Crest Factor less than 1.7
- Minimum starting temperature of -20°F to 50°F.
- Minimum detectable flicker – high frequency.



Retrofit works:

- Replaced old oversized motor to new High Efficiency motor.
- Replaced old fan and motor pulleys with optimally designed size.
- Pulleys alignment to reduce transmission losses.
- Adjustment to electrical connection to motor and of over load relay setting.
- Control and Monitoring.

With the cost of electricity at:

kWh Cost = 0.19 RM/kWh

Peak kW Cost = 17.30 RM/kWh/month

Savings = kWh savings + max. demand savings

= (318 kW x N x 0.19 RM/kWh) + (318 kW x 17.30 RM/kWh)

Where N is the number of operating hours per month.

$N = (20 \times 15.5) + (4 \times 9) + (4 \times 8) = 378$ hours/month

(20 weeks @ 15.5 working hours, 4 Saturdays @ 9 working hours and 4 Sundays @ 8 working hours)

Results:

kWh Savings = RM 22,839.50 per month

Max.Demand Savings = RM 5501.57 per month

Total Monthly Savings = **RM 28,341.07 per month**

Annual Savings = **RM 340,092.84 per annum**

■ Grand Hyatt Hotel, Singapore



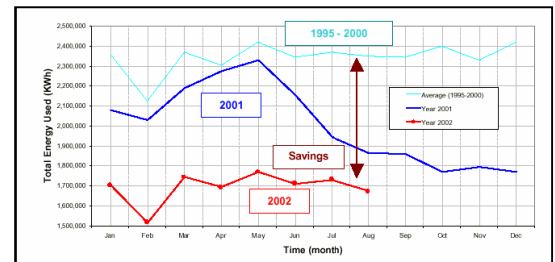
Savings of **S\$ 1,141,000 per annum** with an investment of S\$ 2,559,000.

Total Electricity Consumption was lowered by 8 million kWh and the amount of make up water required for the Cooling Tower was also reduced to 65,000 m³ = S\$ 145,000 annually as a result of optimizing the operation of the Air-Conditioning plant.



Before Retrofit

- System Efficiency = 1.4 kW/ton.
- Chiller Efficiency = 0.75 kW/ton.
- Cooling Tower Efficiency = 0.03 kW/ton.
- AHU Efficiency = 0.318 kW/ton.
- Chilled Water Pump Efficiency = 0.153 kW/ton.
- Condenser Water Pump Efficiency = 0.118 kW/ton.



Energy Usage per year = S\$ 3 million.

Comfort Level (Dew Point Temperature) = 14 degC , bad humidity control.

Hour of Operation = 24 Hours.

After Retrofit

- System Efficiency = 0.58 kW/ton (improvement of ±45.22%)
- Chiller Efficiency = 0.485 kW/ton (improvement of ±35.36%)
- Cooling Tower Efficiency = 0.025 kW/ton (improvement of ±2.83%)
- AHU Efficiency = 0.029 kW/ton (improvement of ±90%)
- Chilled Water Pump Efficiency = 0.031 kW/ton (improvement of ±79.86%)
- Condenser Water Pump Efficiency = 0.035 kW/ton (improvement of ±74.07%)

Energy Usage per year = S\$ 1.1 million.

Comfort Level (Dew Point Temperature) = 10 degC , good humidity control.

Hour of Operation = 24 Hours.

"New Energy Efficiency Benchmark.....*more than* just a Return on Investment (ROI) of 45%."

Daniel Chong – Operations Analyst, Grand Hyatt Singapore.

- **Prime Minister Office (PMO), Putrajaya**

Installation Of Power Quality/ Harmonic Filter Device.

We do a Power Quality (PQ) Improvement at Prime Minister Office (PMO), Putrajaya.

PQ Analysis before & after Active Harmonic Filer (AHF)Installation (Current Status Harmonics) as below :

Parameter at AC MSB 2	Value Recorded From PQ Meter	
	Before Energize AHF	After Energize AHF
Voltage, V	427.4V	427.0 V
Running current, A	203.9A	191.6 A
THD-I	39.39 to 46.26%	7.12 to 7.61%
THD-U	1.50 to 1.59%	1.03 to 1.08%



- Other highlights of our Energy Efficiency Retrofit & Improvement project:

CLIENT	DESCRIPTION
TWP sdn bhd, Johor	Total Retrofit Project cost RM 1,952,000 with Savings of RM 515,908 per year at 25.87% ROI
Raffles City, Singapore	AHU Retrofit 30% of energy cost and 50% reduction on AHU operating cost
Singapore General Hospital	AHU & Pumps Retrofit
ST Microelectronics, Ang Mo Kio, Singapore	Energy Efficiency Improvement project S\$ 350,000 savings per year with total 350 kW reduction
Agilent Technologies Pte Ltd	Pumps retrofit complete with Energy Monitoring System
Singapore Science Centre	Retrofit and replacement of 9 AHU 40% average savings
Institute of Southeast Asian Studies (ISEAS)	Total Retrofit & installation of Electric Eye Software S\$ 70,000 per year savings
Tien Wah Press, Singapore	Pumps and Cooling Tower Retrofit complete with Energy Monitoring System 252,600 kWh/year of power savings
DBS Finance & Data Centre, Singapore	Total HVAC Retrofit 45% improvement at 33% ROI
Western Digital, Singapore	AHU Retrofit
Becton Dickinson Medical, Singapore	Pumps Retrofit complete with Energy Monitoring System 60% average savings

Energy Audit

Below are some highlights of our implemented Energy Audit:

YEAR	CLIENT	DESCRIPTION
2017	Samsung Electronics Sdn Bhd	Full Detailed Energy Audit at Samsung Electronics Sdn Bhd
	HEKTAR Group	Chiller Energy Audit at Wetex Parade, Muar
	Multiplex Packaging Sdn Bhd	Full Detailed Energy Audit at Multiplex Packaging Sdn Bhd
	CAMFILL	Energy Audit at CAMFIL Malaysia Sdn Bhd
	GBI	Energy Audit at Pharmaniaga, Perak
	HEKTAR Group	Chiller Energy Audit at Mahkota Parade, Melaka
	HEKTAR Group	Chiller Energy Audit at Central Square, Kedah
	HEKTAR Group	Chiller Energy Audit at Subang Parade
	GBI	Chiller Energy Audit at Pharmaniaga, Bangi
	Jabatan Kerja Raya (JKR)	Chiller Energy Audit at KKR
Sutera Intrajaya Sdn Bhd	Chiller Energy Audit at HUSM	
2016	Telekom Malaysia Jalan Raja Chulan	Maintenance and monitoring services for Energy Saving Chiller and control System at Telekom JRC
	EUROMOBIL Sdn Bhd	Full Detailed Energy Audit at Euromobil Berhad
	EON Berhad	Full Detailed Energy Audit at EON Berhad
	Menara Telekom Malaysia (ES2)	To Supply, Install and Upgrade ES2 Existing Monitoring System
2015	Prime Minister office (PMO)	Installation Of Power Quality/ Harmonic Filter Device.
	CH2M HILL Singapore Pte. Ltd.	Energy Audit at Semiconductor Plant in Freescale Kuala Lumpur
	CH2M HILL Singapore Pte. Ltd.	Energy Audit at Semiconductor Plant in Freescale Tian Jin, China
	Western Digital (M) Sdn Bhd	Chilled Water Optimization at WDM P6
	Sutera Intrajaya Sdn Bhd	Hospital Temerloh, Pahang
	Aruss Synergy Sdn Bhd	Electrical apportionment and Energy audit (UPM)
	Jana Tanmia (M) Sdn Bhd	Energy audit at Hospital Kulai, Johor
2014	Western Digital (M) Sdn Bhd	P1L1 BEST LAB, Western Digital (M)
	Operon Malaysia Sdn Bhd	Maybank - Measurements & Consultancy Work (Selangor Branch's - 100 sites) (Federal Territory - 78 sites)
	Greengineers Sdn Bhd	Chiller Audit, at Factory in Batang Berjuntai
	Climate Edge Consult Sdn Bhd	Parcel E8,E2,E12,E11,E9,E14,E15,E13, Putrajaya
	CNNS Technasco Sdn Bhd	AEON Big Subang
	Stagno Tech Sdn Bhd	Ibu Pejabat Polis Bukit Aman, Kuala Lumpur
	Jangka Pretasi Sdn Bhd	Bangunan Perbendaharaan 2, (2G8), Putrajaya

YEAR	CLIENT	DESCRIPTION
2014	Mizura Sdn Bhd	MOF Building Audit, Bangunan Perbendaharaan (2G2), Putrajaya
	KFM Holdings Sdn Bhd	'HIGH PERFORMANCE GREEN BUILDING', Kompleks Perdana Putra, Putrajaya -installation of new set of power quality/harmonic filter device ('the Works')
	Stagno Tech Sdn Bhd	Jabatan Kastam Diraja Malaysia, (2G1AB), Putrajaya
2013	KFM Holdings sdn bhd	Prime Minister Office, Putrajaya
	KFM Holdings sdn bhd	Dataran Maybank (Etiqa), Kuala Lumpur
	KFM Holdings sdn bhd	Etiqa Twins Building, Kuala Lumpur
	KFM Holdings sdn bhd	Etiqa Academy , Kuala Lumpur
	CNNS Technasco sdn bhd	Menara Maybank, Kuala Lumpur
	CNNS Technasco sdn bhd	Maybank Academy, Bangi
	CNNS Technasco sdn bhd	Maybank Data Centre, Shah Alam
	Telekom (M) R&D sdn bhd	Bangunan Kementerian Kemajuan Luar Bandar & Wilayah (4G8), Putrajaya
	Telekom (M) R&D sdn bhd	Bangunan Kastam & Aduan (2G1A & 2G1B), Putrajaya
	Greengineers sdn bhd	Ampang Park Shopping Complex, Kuala Lumpur
2012	Telekom (M) R&D sdn bhd	Bangunan Kementerian Komunikasi & Multimedia (4G9), Putrajaya
	Mizura sdn bhd	Parcel C, Putrajaya (7 buildings)
	Semasa Services sdn bhd	Bangunan EPF, Kuala Lumpur
	Telekom (M) R&D sdn bhd	Bangunan Kementerian Luar Bandar & Wilayah (4G8), Putrajaya
	Telekom (M) R&D sdn bhd	Bangunan Kementerian Perumahan & Kerajaan Tempatan (4G10), Putrajaya
2011	Global Facilities Management Sdn Bhd	Bangunan Sultan Iskandar, Custom & Immigration Quarantine (CIQ), Johor
2010	Alpha Eight Tech sdn bhd	KL Sentral & 1 Sentral, Kuala Lumpur
	Prince Hotel	Prince Hotel, Kuala Lumpur
	Park Royal Hotel	Park Royal Hotel, Penang
	Seri Pacific Hotel	Seri Pacific Hotel, Kuala Lumpur

YEAR	CLIENT	DESCRIPTION
2009	Radical Box sdn bhd	TM Building, Kulim
2008	Nestle	Nestle Plant, Chembong
2006	Green Productivity Foundation	Taiwan Airport, Chiang Kai Shek, Taiwan
2003	Nagase & Co Ltd	Sony Factory, Kokubu, Japan
2000	Agilent Technologies sdn bhd	Agilent Plant, Penang
	Singapore General Hospital	College of Medicine Building, Singapore



KEMENTERIAN KEWANGAN MALAYSIA

SIJIL AKUAN PENDAFTARAN SYARIKAT

NO SIJIL : K22148721981373509
NO RUJUKAN PENDAFTARAN : 357-02215348
TEMPOH SAH LAKU : 24/10/2014 - 23/10/2017

Bahawa dengan ini diperakui syarikat :

E-EYE SDN BHD (393546-M)
NO 17A, JALAN BK 5A/2
PUCHONG
NOT DEFINED
47100 BANDAR KINRARA
SELANGOR, MALAYSIA

Telah berdaftar dengan Kementerian Kewangan Malaysia dalam bidang bekalan/perkhidmatan di bawah sektor, bidang dan sub-bidang seperti di Lampiran A. Kelulusan ini adalah tertakluk kepada syarat-syarat seperti yang dinyatakan di Lampiran B. Individu yang diberi kuasa oleh syarikat bagi urusan perolehan Kerajaan adalah seperti berikut :

NORAZIAWATI BINTI TUKIRAN

890116235512

ASS. FINANCE & ADMIN

t.t

DATO' HASHMUDDIN BIN MOHAMMAD

Bahagian Perolehan Kerajaan
b.p Ketua Setiausaha Perbendaharaan
Kementerian Kewangan Malaysia

Tarikh Berdaftar Dengan Kementerian Kewangan Malaysia : 24/10/2014

(Sijil ini adalah cetakan komputer dan tidak memerlukan tandatangan).

LAMPIRAN A

NO SIJIL : K22148721981373509
NO RUJUKAN PENDAFTARAN : 357-02215348
TEMPOH SAH LAKU : 24/10/2014 - 23/10/2017

BIL	TARIKH DAFTAR BIDANG	KOD BIDANG	KETERANGAN	STATUS
1	24/10/2014	222801	TEKNOLOGI HIJAU	Aktif

Tarikh Berdaftar Dengan Kementerian Kewangan Malaysia : 24/10/2014

Mukasurat 1 dari 1



**PENDAFTARAN
SYARIKAT PERKHIDMATAN TENAGA
(ESCO)**

SURUHANJAYA TENAGA dengan ini meluluskan permohonan syarikat

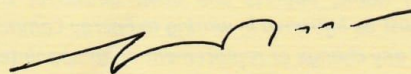
**E-EYE SDN BHD
No. 17A, Jalan BK 5A/2
Bandar Kinrara
47100 Puchong
Selangor**

untuk menjalankan kerja-kerja sebagai syarikat perkhidmatan tenaga
berkuatkuasa dari tarikh :-

Tarikh Kelulusan : 28 Oktober 2016

Tarikh Tamat Kelulusan : 27 Oktober 2017

Syarikat perlu mematuhi segala keperluan dan syarat-syarat sebagai
ESCO sebagaimana yang ditetapkan seperti di muka belakang.



.....
(DATUK Ir. AHMAD FAUZI BIN HASAN)
Ketua Pegawai Eksekutif
Suruhanjaya Tenaga

Tarikh: 28 Oktober 2016

Certificate of
Membership
(Ordinary Class "A")



*Malaysia Association of Energy
Service Companies*

Hereby certify that

E-Eye Sdn Bhd

is a member in good standing of the Association

The registration no is : **1007**

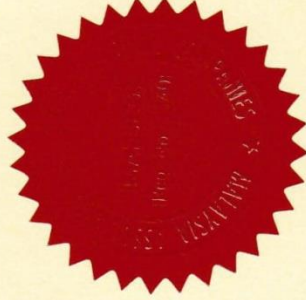
This certificate expires on : **31st December 2017**



Ar. Zulkifli Hj. Zahari
President



Dharamarajah A/L Tahamly Rajah
Honorary Secretary



Point of Contact

Muhammad Riza Abd Hamid
Managing Director
019 331 2676
riza@eeye.com.my

Nurul Ezatty binti Ramly
Project Engineer
010-566 1709
ezatty@eeye.com.my

Mohd Fairul Azwan bin Ramly
Engineer
019-808 5078
azwan@eeye.com.my

E-Eye Sdn Bhd
No.17A, Jalan BK 5A/2
Bandar Kinrara
47180 Puchong
Selangor Darul Ehsan
Malaysia

Tel: +603 8070 2276
Fax: +603 8070 2059



E-Eye Sdn. Bhd.

(393546-M)